

1 VÁLIDA
CAMPEONATO
NACIONAL

12
14

CAMPEONATO
**INTER
ANDINO**  20
26
RALLY F.F.F.

LIBRO DE RUTA

assa



UNIVERSIDAD
UNIANDES

U SEGUROS
UNIDOS

privilegio
seguros médicos prepagados


KIA
Movement that inspires

 **Grupo
Mavesa**


QUITO MOTORS


hotellambato

QUINTA DE
EVENTOS
San Martín
BODAS - CELEBRACIONES


FEDAK
FEDERACIÓN DE ENTRENADORES DE ATLETISMO PROFESIONAL

CNE
COMITÉ NACIONAL DE ATLETISMO

assa | ISUZU

UNIVERSIDAD
UNIANDDES



SEGUROS
UNIDOS

privilegio
seguros médicos propiarios

JUEVES 12 REVISION ADMINISTRATIVA - MECANICA Y SEGURIDAD OBLIGATORIA
PARQUE DE LA FAMILIA PARQUE DE ASISTENCIA

INGRESO TODAS LAS CATEGORIAS:	8:00	11:00
REVISIONES MECANICAS DE SEGURIDAD Y ADMINISTRATIVA	8:00	17:00
08:00 A 09:30 AM	CATEGORIA T1	GRUPO TECNICO #1
09:00 A 10:00 AM	T3	GRUPO TECNICO #2
09:30 A 10:30 AM	T4	GRUPO TECNICO #3
10:00 A 11:00 AM	TT	GRUPO TECNICO #1
10:30 A 11:30 AM	UTV-T	GRUPO TECNICO #2
11:00 A 12:00 AM	UTV-R	GRUPO TECNICO #3
11:30 A 12:30 PM	CAMIONETAS GRUPO TECNICO #1	
12:30 A 13:30 PM	LOUNCH	
13:30 A 14:30 PM	RC2N	GRUPO TECNICO #2
14:00 A 15:00 PM	RC5	GRUPO TECNICO #3
14:30 A 15:30 PM	RC4	GRUPO TECNICO #1
15:00 A 16:00 PM	RC3	GRUPO TECNICO #2
15:30 A 16:30 PM	N5 - PROTOTIPOS - YARI: GRUPO TECNICO #3	
16:00 A 17:00 PM	RALLY 2 / R5 GRUPO TECNICO #1	
PARQUE CERRADO PARQUE PROVINCIAL DE LA FAMILIA		



QUITO MOTORS



Grupo
Mavesa

KAN
Movement that inspires



hotelambato

assa | ISUZU

UNIVERSIDAD
UNIANDES



QUITO MOTORS



Grupo
Mavesa



VIERNES 13 DE MARZO REAGRUPAMIENTO PARQUE DE LA FAMILIA

ENTRADA DE 8 A 9:00 ENTRADA PARQUE DE LA FAMILIA
09:00 A 09:45 REVISION VEHICULOS CON OBSERVACION
10:00 A 13:00 HORAS PRESENTACION TRIPULACIONES
13:00 A 14:30 LUNCH

ENLACE	PRIME	LOCALIZACION	K.M ENLACE	K.m. PRIME	K.m. TOTAL	TIEMPO IDEAL	HORA INGRESO PAICARTYA AMARILLA	HORA SALIDA REAL TC	PASO 1ER AUTO	TIEMPO MAXIMO
ENLACE 1	1	PARQUE DE LA FAMILIA - PALAMA 1	0,50		0,50	00:10:00	14:00:00		14:10:00	
	TC1	SUPER PRIME PALAMA 1 - PALAMA PISTA MOTO CRUS		2,91	2,91	00:02:00	14:10:00	14:13:00	14:15:00	00:05:00
ENLACE 2	2	PALAMA - PARQUE DE LA FAMILIA	1,50		2,00	00:10:00	14:15:00		14:25:00	
LECTURA DE RESULTADOS Y SELECCION DEL ORDEN DE PARTIDA										15:30:00
ENLACE 3	3	PARQUE DE LA FAMILIA - PALAMA 1	0,50		3,41	00:15:00	15:45:00		16:00:00	
	TC2	PALAMA 1 - PALAMA PISTA MOTOCROS		2,91	2,91	00:02:00	16:00:00	16:03:00	16:05:00	00:05:00
ENLACE 4	4	PALAMA - PARQUE DE LA FAMILIA	1,50		4,41	00:10:00	16:05:00		16:15:00	
TOTAL ENLACE			4,00							
TOTAL TRAMOS CRONOMETRADOS					5,82					

PARQUE CERRADO	PARQUE PROVINCIAL DE LA FAMILIA	HASTA LAS	20:00:00
----------------	---------------------------------	-----------	----------

SEGUROS UNIDOS

privilegio
seguros medidores propagados

KM
Movement that inspires

hotelambato



SABADO 14 DE MARZO REAGRUPAMIENTO PARQUE DE LA FAMILIA

ENLACE	PRIME	LOCALIZACION	K.M ENLACE	K.m. PRIME	K.m. TOTAL	TIEMPO IDEAL	HORA PASADO PASADILLA AMARILLA	HORA SALIDA REAL TC	PASO TER AUTO	TIEMPO MAXIMO
REAGRUPAMIENTO PARQUE DE LA FAMILIA										
ENLACE	5	P. FAMILIA - U.E. MILENUN (SECTOR EL GALPON)	7,26		7,26	00:20:00		08:40:00		09:00:00
	TC3	ECUELA MILENUN - PUNGUOLIMA - ASPACHACA	20,60		27,86	00:15:00	09:00:00	09:03:00		09:18:00
ENLACE	6	ASPACHACA - MERCADO PASA	5,00		32,86	00:15:00		09:18:00		09:33:00
	TC4	PASA - LUJUALC- MOGATO - AGUJAN	8,00		35,86	00:05:00	09:33:00	09:36:00		09:41:00
ENLACE	7	AGUJAN - PARQUE DE LA FAMILIA	15,00		15,00	00:25:00		09:41:00		10:06:00
ASISTENCIA EN PARQUE DE LA FAMILIA										
ENLACE	8	PARQUE DE LA FAMILIA - LOMA GORDA (INCLUYE REPOSTAJE FLUIDOS)	33,48		69,34	00:05:00		10:46:00		11:36:00
	TC5	LOMA GORDA - MULLA CORRAL - TILIVI	39,80		109,14	00:27:00	11:36:00	11:39:00		12:06:00
ENLACE	9	TILIVI - PARQUE DE LA FAMILIA	20,00		129,14	00:35:00		12:06:00		12:41:00
ASISTENCIA EN PARQUE DE LA FAMILIA										
ENLACE	10	PARQUE DE LA FAMILIA - LOMA GORDA (INCLUYE REPOSTAJE FLUIDOS)	33,48		33,48	00:05:00		13:21:00		14:11:00
	TC6	LOMA GORDA - MULLA CORRAL - TILIVI	39,80		73,28	00:27:00	14:11:00	14:14:00		14:41:00
ENLACE	11	TILIVI - PARQUE DE LA FAMILIA	20,00		93,28	00:35:00		14:41:00		15:16:00
TOTAL ENLACES 134,22										

TOTAL TRAMOS CRONOMETRADOS	109,20
TOTAL RALLY	114,02

PREMIAACION PARQUE DE LA FAMILIA 16:45:00HORAS



QUITO MOTORS



Grupo Mavesa



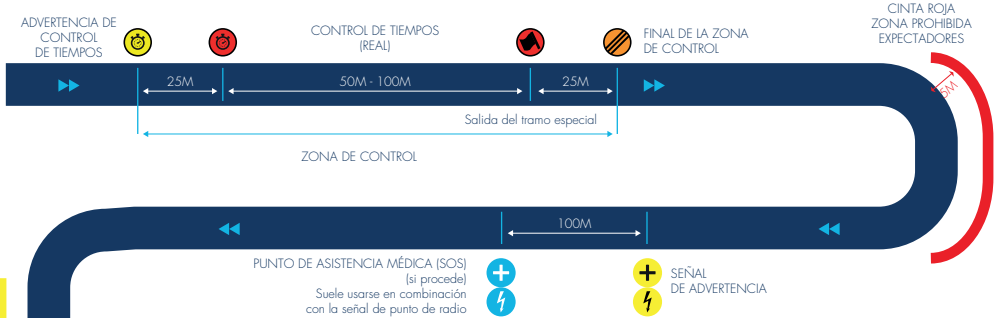
Movement that inspires



hotelambato

EJEMPLO DE DISPOSICIÓN DE UN TRAMO CRONOMETRADO

SECUENCIA DE SALIDA DE UN TRAMO ESPECIAL



SECUENCIA DE META DE UN TRAMO ESPECIAL



Precontrol de tiempos 	Control de tiempos 	Salida del tramo especial 	Final zona de control
Premeta volante del tramo cronometrado 	Meta volante del tramo cronometrado 	Control de parada 	Final zona de control

PANCARTAS EN UN TRAMO CRONOMETRADO

0,00

0,00

0000
Reset



INICIO
MURO

1

0,00



341°

1°14.765'S
78°39.338'W

0,37

0,37 ↓

2



SUBE

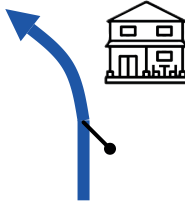
351°

1°14.579'S
78°39.406'W

0,53

0,16

3



POBLADO
SUBE

117°

1°14.579'S
78°39.353'W

1,01

0,48 ↓

4



14°

1°14.372'S
78°39.236'W

1,02

0,01

5



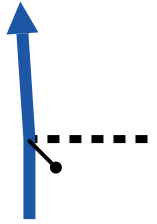
18°

1°14.363'S
78°39.233'W

1,66

0,64 ↓

6



POBLADO

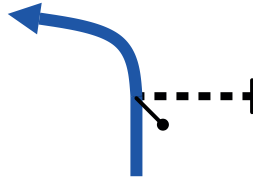
271°

1°14.108'S
78°39.257'W

1,94

0,28 ↓

7



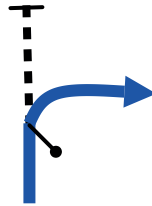
203°

1°14.140'S
78°39.396'W

2,01

0,07 ↓

8



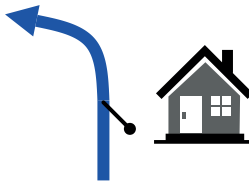
187°

1°14.172'S
78°39.381'W

2,22

0,21

9



SUBE

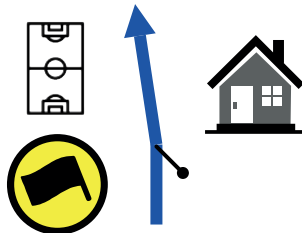
312°

1°14.219'S
78°39.475'W

2,59

0,37 ↓

10



POBLADO
CANCHA

220°

1°14.285'S
78°39.661'W

2,82



TECHO
CASA



0,23 ↓



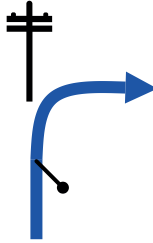
11

203°

2

1°14.387'S
78°39.726'W

2,86



0,04 ↓

12

231°

1°14.405'S
78°39.735'W

2,91



0,05

13

MESA DE
CONTROL

1°14.402'S
78°39.760'W

3

Kilometers

13

Waypoints

3 km

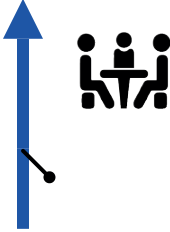
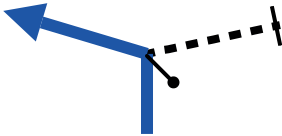
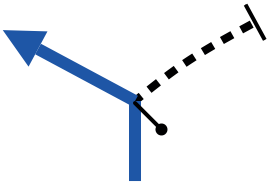
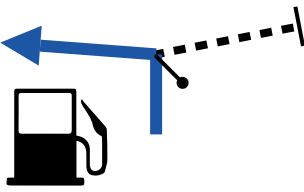
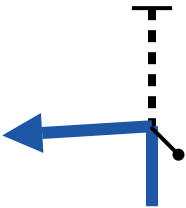
Fuel Range

START

1°14.765'S
78°39.338'W

FINISH

1°14.402'S
78°39.760'W

PAGE 1	ENLACE FIN TC1 - PARQUE FAMILIA	KM TOTAL: 2
<p>0,00</p> <hr/> <p>0,00</p> <p>0,00 ↓</p>	<p>0000 Reset</p> 	<p>INICIO ENLACE</p> <p>281°</p> <p>1°14.402'S 78°39.758'W</p>
<p>0,02</p> <p>0,02</p>		<p>208°</p> <p>1°14.401'S 78°39.768'W</p>
<p>0,59</p> <p>0,57</p>		<p>BAJA</p> <p>182°</p> <p>1°14.419'S 78°40.037'W</p>
<p>1,12</p> <p>0,53</p>		<p>115°</p> <p>1°14.700'S 78°40.026'W</p>
<p>2,07</p> <p>0,95 ↓</p>		<p>INGRESO PARQUE DE LA FAMILIA</p> <p>351°</p> <p>1°14.788'S 78°39.528'W</p>

PROXIMA NOTA
PROCH NOTE
NEXT NOTE

0,04

2,11



FIN ENLACE

0,04

6

351°

**1°14.768'S
78°39.531'W**

**2
Km**

**6
Waypoints**

**2 Km
Fuel Range**

**START
1°14.402'S
78°39.758'W**

**FINISH
1°14.768'S
78°39.531'W**

0,00

0,00

0000

Reset



PARQUE DE LA FAMILIA

0,00

1

171°

1°14.772'S
78°39.530'W

0,03

0,03

2



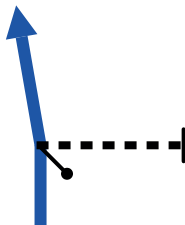
261°

1°14.787'S
78°39.528'W

0,98

0,95

3



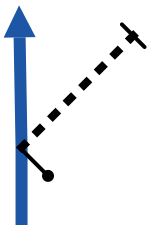
258°

1°14.704'S
78°40.025'W

1,58

0,60

4



334°

1°14.631'S
78°40.281'W

1,93

0,35

5



POBLADO

280°

1°14.543'S
78°40.432'W

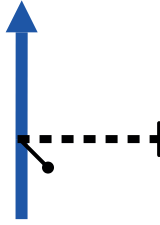
PROXIMA NOTA
PROCH NOTE
NEXT NOTE

1,01

2,94

1,01 ↓

6



QUISAPINCHA

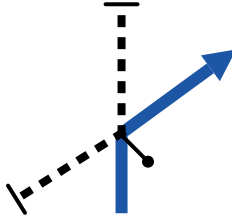
305°

1°14.312'S
78°40.915'W

3,16

0,22 ↓

7



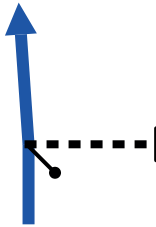
6°

1°14.239'S
78°41.009'W

3,21

0,05 ↓

8



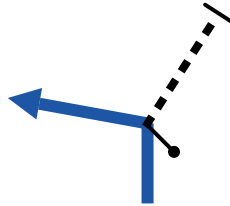
336°

1°14.209'S
78°41.014'W

3,27

0,06 ↓

9



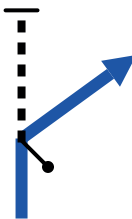
257°

1°14.183'S
78°41.025'W

3,32

0,05

10

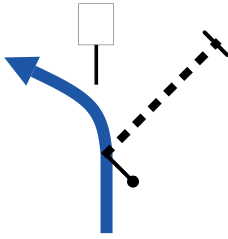


CALLE
MONTALVO

306°

1°14.192'S
78°41.054'W

4,30



EL GALPON

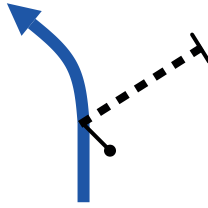
0,98

11

221°

1°13.826'S
78°41.414'W

4,63



0,33

12

227°

1°13.942'S
78°41.529'W

6,65



UNIDAD
EDUCATIVA
MILENIO
PISAKINCHA

2,02

13

328°

1°13.307'S
78°41.760'W

7,20



BAJA

0,55

14

320°

1°13.038'S
78°41.867'W

8,63



VIA EN
MANTENIMIENTO

1,43

15

355°

1°12.395'S
78°42.091'W

8,93



0,30 ↓

16

299°

1°12.246'S
78°42.137'W

9,13



0,20 ↓

17

PUNTE
FIN ENLACE

1°12.282'S
78°42.218'W

9

Kilometers

17

Waypoints

9 km

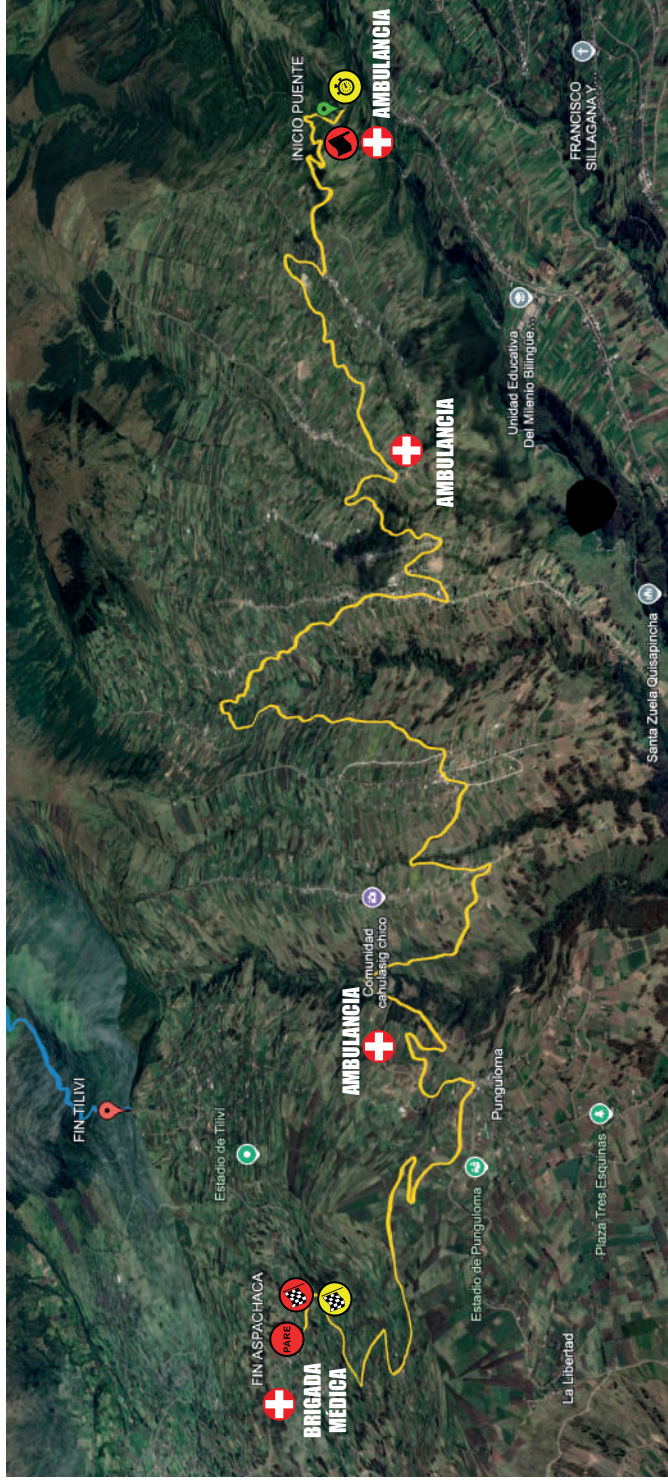
Fuel Range

START
1°14.772'S
78°39.530'W

FINISH
1°12.282'S
78°42.218'W

ENLACE P. FAMILIA - UE MILENIUN - EL GALPON

RALLY F.F.F. 2026 PRIMERA VALIDA CAMPEONATO NACIONAL MAPA TRAMO CRONOMETRADO 3



SECTOR EL GALPON - CAHULASIG CHICO - PUNGULOOMA - ASPACHACA

DISTANCIA: 19,46 Km.

HORA INICIO TC 3

09:00 H

HORA CIERRE DE VIA

07:30 H

ALTITUD MINIMA 3.192 msnm

ALTITUD MAXIMA 3.484 msnm

SABADO 14 DE MARZO



0,00

0,00

0,00 ↓



1

0000
Reset



PUENTE
INICIO

1

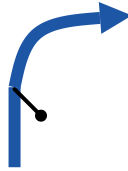
262°

1°12.280'S
78°42.211'W

0,09

0,09 ↓

2



SUBE

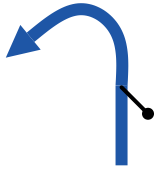
316°

1°12.287'S
78°42.260'W

0,34

0,25

3



CURVA EN
U

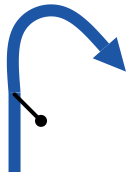
290°

1°12.188'S
78°42.342'W

0,81

0,47

4



CURVA EN
U

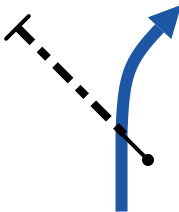
208°

1°12.406'S
78°42.314'W

1,36

0,55

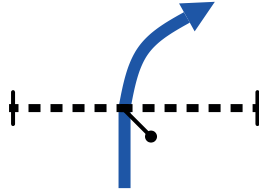
5



255°

1°12.532'S
78°42.313'W

1,83



POBLADO

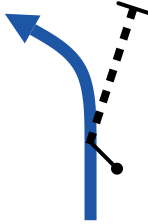
0,47

6

242°

1°12.719'S
78°42.398'W

2,29



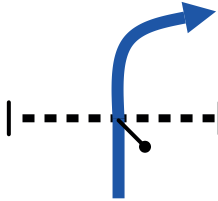
0,46

7

192°

1°12.561'S
78°42.548'W

3,96



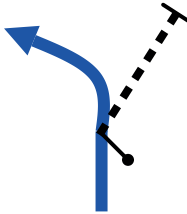
1,67

8

160°

1°13.371'S
78°42.414'W

4,48



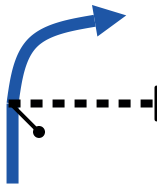
0,52

9

160°

1°13.314'S
78°42.642'W

5,36



POBLADO

0,88

10

190°

1°13.622'S
78°42.353'W

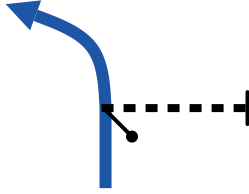
PROXIMA NOTA
PROCH NOTE
NEXT NOTE

0,29

5,65

0,29

11



190°

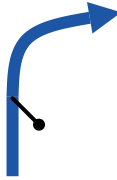
POBLADO

1°13.618'S
78°42.497'W

6,03

0,38

12



239°

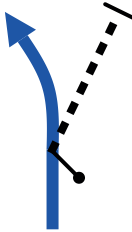
POBLADO

1°13.778'S
78°42.385'W

6,69

0,66

13



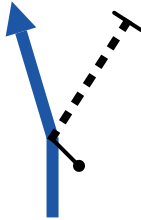
277°

1°13.592'S
78°42.681'W

7,59

0,90

14



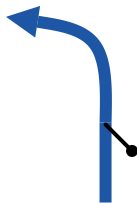
248°

1°13.508'S
78°43.144'W

8,34

0,75

15



279°

1°13.470'S
78°43.509'W

9,09



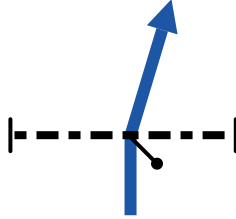
0,75

16

156°

1°13.636'S
78°43.230'W

10,70



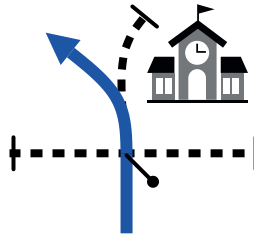
1,61 ↓

17

205°

1°14.131'S
78°42.547'W

10,78



ESCUELA

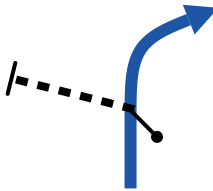
0,08 ↓

18

193°

1°14.161'S
78°42.576'W

10,98



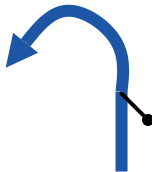
0,20

19

203°

1°14.237'S
78°42.511'W

11,57



0,59

20

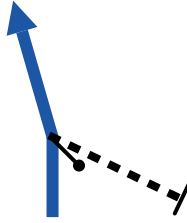
214°

1°14.312'S
78°42.810'W

12,0 0

0,43 ↓

21



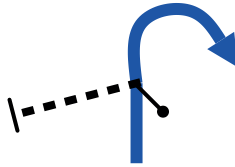
115°

1°14.420'S
78°42.615'W

12,1 3

0,13

22



219°

1°14.435'S
78°42.554'W

CURVA EN
U

13,5 6

1,43

23



151°

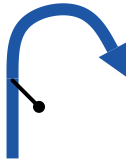
1°14.490'S
78°43.250'W

PUENTE

14,3 4

0,78

24



211°

1°14.771'S
78°42.953'W

CURVA EN
U

15,2 2

0,88 ↓

25



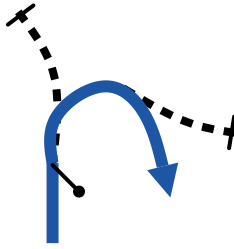
87°

1°14.860'S
78°42.951'W

15,4 6

0,24

26



POBLADO SUBE
ANGOSTO

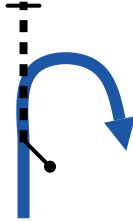
136°

1°14.895'S
78°42.828'W

16,2 7

0,81

27



CURVA EN
U

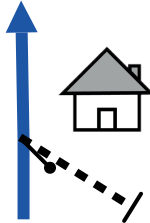
235°

1°15.104'S
78°43.152'W

17,3 4

1,07 ↓

28



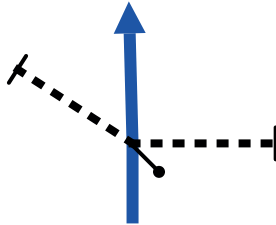
193°

1°15.367'S
78°43.260'W

17,5 9

0,25 ↓

29



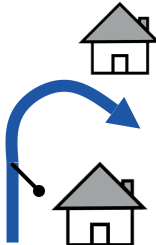
239°

1°15.451'S
78°43.354'W

17,7 6

0,17 ↓

30



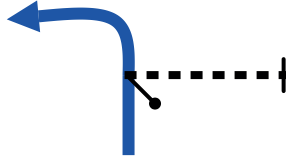
259°

1°15.480'S
78°43.438'W

17,9 9

0,23

31



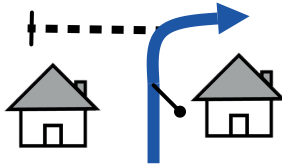
319°

1°15.374'S
78°43.435'W

18,4 7

0,48

32



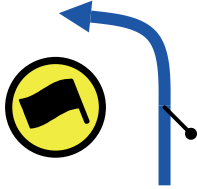
240°

1°15.479'S
78°43.663'W

19,0 8

0,61 ↓

33



346°

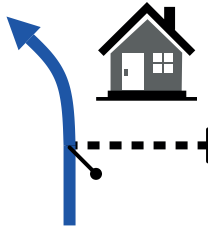
1°15.231'S
78°43.784'W

19,2 8

0,20 ↓



34



2

225°

1°15.223'S
78°43.883'W

19,4 6

0,18

35



1°15.286'S
78°43.948'W

19

Kilometers

35

Waypoints

19 km

Fuel Range

START

**1°12.280'S
78°42.211'W**

FINISH

**1°15.286'S
78°43.948'W**

TC3 UEMILENIUN-PUNGULOMA -ASPACHACA

0,00

0,00

0000
Reset



INICIO ENLACE

0,00 ↓

1

278°

1°15.288'S
78°43.967'W

0,02

0,02 ↓

2



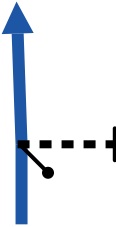
178°

1°15.286'S
78°43.979'W

0,27

0,25

3



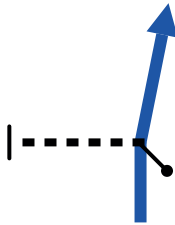
183°

1°15.411'S
78°44.005'W

0,62

0,35

4



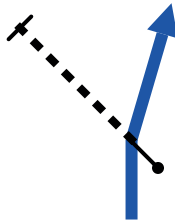
202°

1°15.591'S
78°43.955'W

1,17

0,55

5



170°

1°15.739'S
78°43.812'W

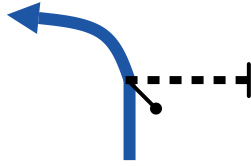
PROXIMA NOTA
PROCH NOTE
NEXT NOTE

0,48

1,65

0,48 ↓

6



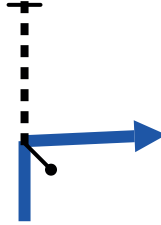
172°

1°15.844'S
78°43.939'W

1,91

0,26 ↓

7



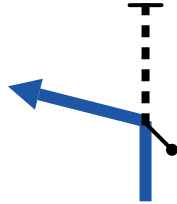
253°

1°15.980'S
78°43.900'W

2,01

0,10 ↓

8



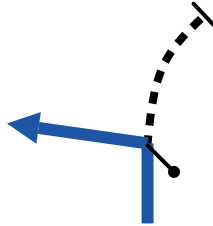
195°

1°15.983'S
78°43.955'W

2,46

0,45 ↓

9



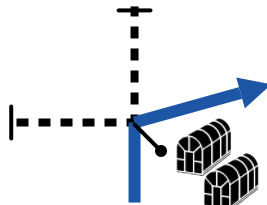
93°

1°16.218'S
78°43.932'W

2,65

0,19 ↓

10



MERCADO
PASA

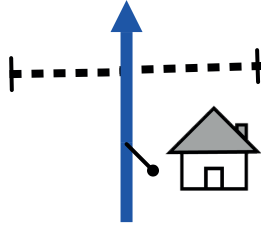
146°

1°16.191'S
78°43.836'W

2,82

0,17

11



FIN ENLACE

1°16.255'S
78°43.767'W

3

Kilometers

11

Waypoints

3 km

Fuel Range

START

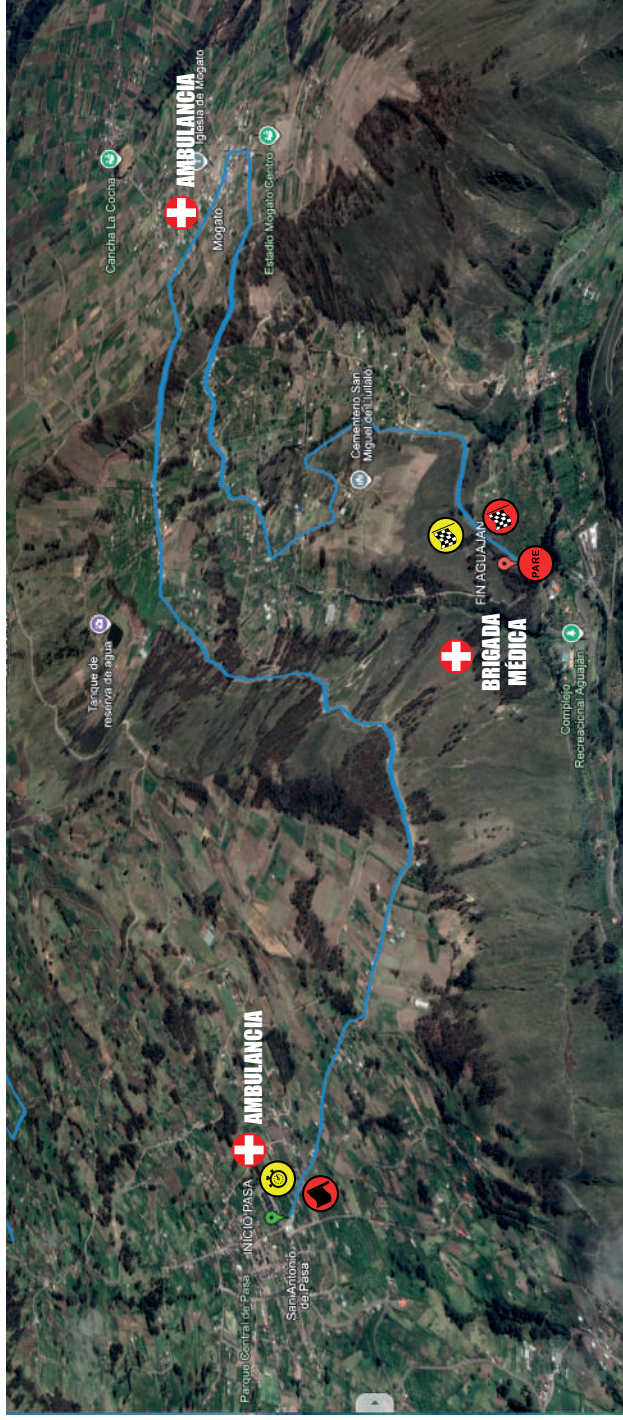
1°15.288'S
78°43.967'W

FINISH

1°16.255'S
78°43.767'W

ENLACE ASPACHACA - MERCADO PASA

RALLY F.F.F. 2026 PRIMERA VALIDA CAMPEONATO NACIONAL MAPA TRAMO CRONOMETRADO 4



MERCADO PASA - LLULLALO - MOGATO - AGUAJAN

DISTANCIA : 8 Km.

HORA INICIO TC 4

HORA CIERRE DE VIA

09:33 H

08:00 H

ALTITUD MINIMA 2.817 msnm

ALTITUD MAXIMA 3.146 msnm

SABADO 14 DE MARZO



0,00

0,00

0,00



0000
Reset



INICIO
CANCHA

1

128°

1°16.221'S
78°43.810'W

3,44

3,44

2



SUBE

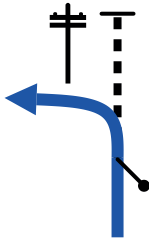
125°

1°16.033'S
78°42.538'W

3,91

0,47 ↓

3



POBLADO

126°

1°16.195'S
78°42.342'W

4,10

0,19 ↓

4



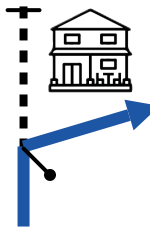
84°

1°16.186'S
78°42.242'W

4,20

0,10 ↓

5



MOGATO

157°

1°16.181'S
78°42.193'W

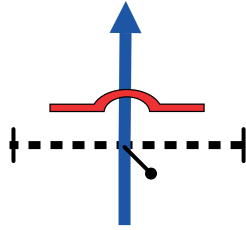
PROXIMA NOTA
PROCH NOTE
NEXT NOTE

0,27

4,47

0,27 ↓

6



OJO
ROMPE
VELOCIDAD
X2

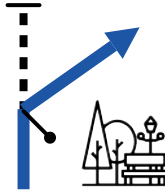
147°

1°16.314'S
78°42.125'W

4,59

0,12

7



PARQUE
MOGATO

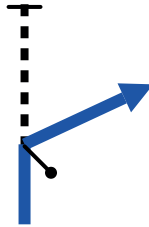
204°

1°16.367'S
78°42.092'W

4,76

0,17 ↓

8



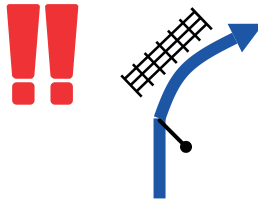
279°

1°16.447'S
78°42.137'W

4,98

0,22

9



RIEL CONTENCION
BAJA

323°

1°16.429'S
78°42.252'W

5,56

0,58

10



POBLADO

255°

1°16.206'S
78°42.453'W

5,88



OJO SUCIO

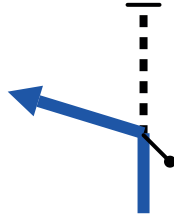
0,32

11

210°

1°16.190'S
78°42.611'W

6,31



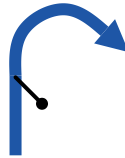
0,43

12

177°

1°16.309'S
78°42.782'W

6,91



CURVA EN
U

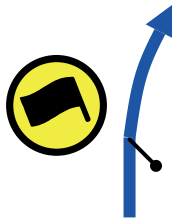
0,60

13

61°

1°16.398'S
78°42.650'W

7,34



BAJA

0,43

14

212°

1°16.599'S
78°42.666'W

7,79



BAJA

0,45



15

244°

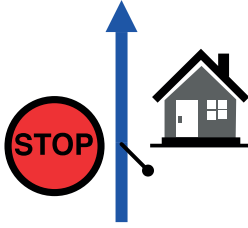
1°16.705'S
78°42.825'W

2

8,06

0,27

16



1°16.796'S
78°42.939'W

8

Miles

16

Waypoints

8 mi

Fuel Range

START

1°16.221'S
78°43.810'W

FINISH

1°16.796'S
78°42.939'W

TC 3 -6 PASA - LLULLALO - MOGATO - AGUAJAN

0,00

0,00

0,00 ↓

1

0000
Reset



INICIO
ENLACE

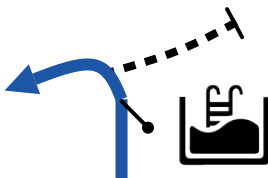
270°

1°16.822'S
78°43.001'W

0,16

0,16 ↓

2



COMPLEJO
AGUAJAN

109°

1°16.870'S
78°43.044'W

0,26

0,10

3



PUENTE

157°

1°16.876'S
78°42.992'W

2,18

1,92

4



PUENTE

86°

1°17.111'S
78°42.241'W

6,07

3,89

5



20

POBLADO

29°

1°15.953'S
78°40.776'W

10,1 0

4,03

6



20

POBLADO

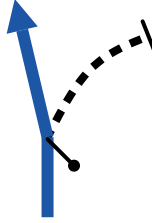
40°

1°15.521'S
78°39.078'W

10,8 6

0,76 ↓

7



20

POBLADO
MIRAFLORES

32°

1°15.333'S
78°38.731'W

10,9 9

0,13 ↓

8



20

PUENTE

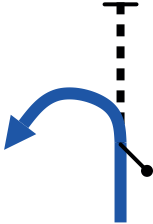
41°

1°15.320'S
78°38.673'W

11,0 8

0,09 ↓

9



CURVA EN
U

BAJA

279°

1°15.281'S
78°38.651'W

11,1 2

0,04 ↓

10



20

BAJA

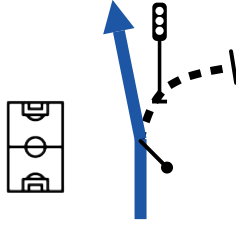
271°

1°15.287'S
78°38.672'W

11,3 2

0,20

11



20

SUBE

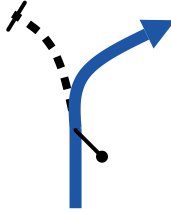
261°

1°15.251'S
78°38.770'W

11,9 8

0,66

12



20

FICOA
LAS PALMAS

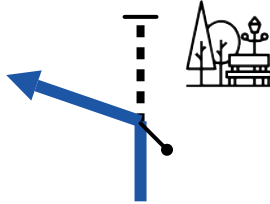
35°

1°15.004'S
78°38.740'W

12,8 0

0,82 ↓

13



20

PARQUE
DE LOS
QUINDES
SUBE

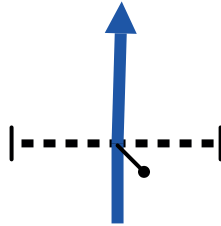
325°

1°14.753'S
78°38.399'W

12,9 8

0,18 ↓

14



20

POBLADO

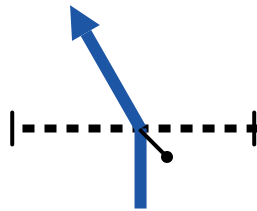
311°

1°14.690'S
78°38.473'W

13,1 0

0,12

15



20

POBLADO

281°

1°14.647'S
78°38.524'W

14,1 4

1,04 ↓

16



302°

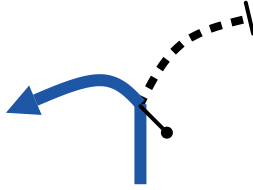
CURVA EN
U

1°14.715'S
78°39.030'W

14,3 9

0,25

17



194°

1°14.607'S
78°39.044'W

15,3 5

0,96

18



258°

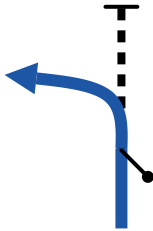
CURVA EN
U

1°14.983'S
78°39.248'W

15,7 8

0,43

19



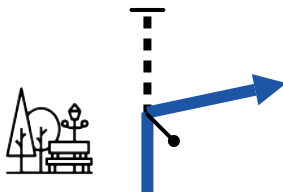
291°

1°14.777'S
78°39.333'W

16,1 4

0,36 ↓

20



349°

FIN ENLACE
INGRESO
P. FAMILIA

1°14.787'S
78°39.524'W

16

Kilometers

20

Waypoints

16 km

Fuel Range

START

**1°16.822'S
78°43.001'W**

FINISH

**1°14.781'S
78°39.525'W**

ENLACE AGUAJAN - FICOA - P. FAMILIA

0,00

0,00 ↓

1



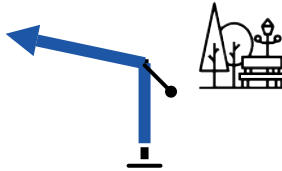
169°

1°14.781'S
78°39.525'W

0,01

0,01

2



91°

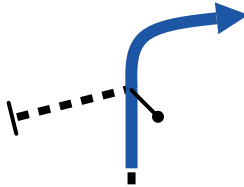
1°14.787'S
78°39.524'W

INICIO ENLACE
P. FAMILIA

0,37

0,36

3



144°

1°14.777'S
78°39.333'W

BAJA

0,80

0,43

4



33°

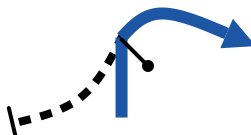
1°14.983'S
78°39.248'W

CURVA EN
U

1,76

0,96 ↓

5



120°

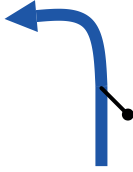
1°14.607'S
78°39.044'W

BAJA

2,02

0,26

6



CURVA EN
U

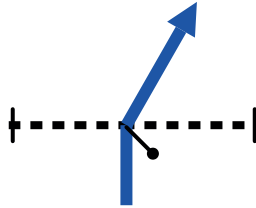
93°

1°14.715'S
78°39.030'W

3,05

1,03

7



20

POBLADO

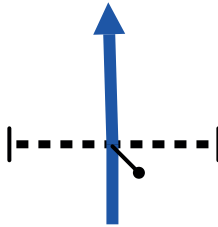
131°

1°14.647'S
78°38.524'W

3,17

0,12

8



20

POBLADO

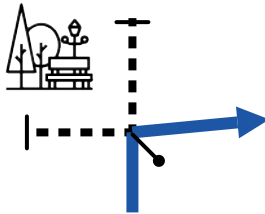
129°

1°14.690'S
78°38.473'W

3,34

0,17

9



20

PARQUE
DE LOS
QUINDES

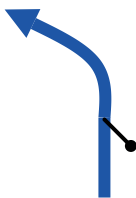
219°

1°14.751'S
78°38.405'W

4,16

0,82

10



20

FICOA
LAS PALMAS

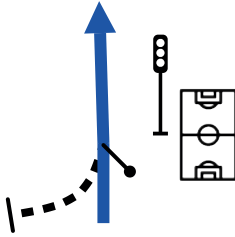
202°

1°15.002'S
78°38.743'W

4,83

0,67

11



20

SUBE

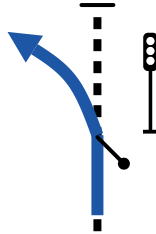
78°

1°15.259'S
78°38.771'W

5,02

0,19 ↓

12



20

BAJA

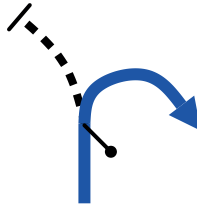
52°

1°15.299'S
78°38.683'W

5,09

0,07 ↓

13



CURVA EN

U

BAJA

173°

1°15.281'S
78°38.651'W

5,18

0,09 ↓

14



20

PUENTE

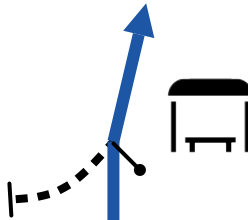
259°

1°15.320'S
78°38.673'W

5,31

0,13 ↓

15



20

POBLADO
MIRAFLORES

225°

1°15.333'S
78°38.731'W

6,07

0,76

16



20

POBLADO

229°

1°15.521'S
78°39.078'W

10,10

4,03

17



20

POBLADO

188°

1°15.953'S
78°40.776'W

13,99

3,89

18



PUENTE

217°

1°17.111'S
78°42.241'W

15,91

1,92

19



PUENTE

322°

1°16.876'S
78°42.992'W

17,12

1,21

20



232°

1°16.902'S
78°43.631'W

PROXIMA NOTA
PROCH NOTE
NEXT NOTE

0,35

17,4 7



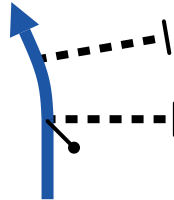
0,35

21

313°

1°16.928'S
78°43.810'W

18,4 8



ENTRADA
PASA

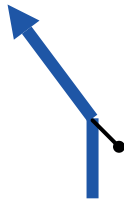
1,01

22

317°

1°16.974'S
78°44.233'W

20,2 9



1,81

23

236°

1°17.030'S
78°45.102'W

21,3 6



1,07

24

321°

1°16.742'S
78°45.473'W

22,1 6



0,80

25

83°

1°16.773'S
78°45.816'W

PROXIMA NOTA
PROCH NOTE
NEXT NOTE

2,64

24,8 0

2,64

26



POBLADO

236°

1°16.915'S
78°46.811'W

26,3 7

1,57

27



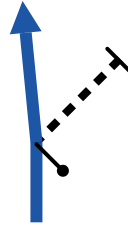
296°

1°17.103'S
78°47.501'W

29,0 4

2,67 ↓

28



272°

1°16.917'S
78°48.584'W

29,2 0

0,16

29



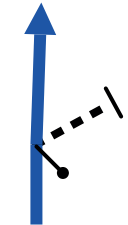
177°

1°16.919'S
78°48.664'W

31,3 5

2,15

30



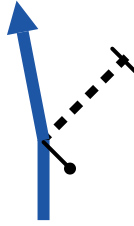
20

LLANGAHUA
POBLADO

278°

1°17.164'S
78°49.581'W

31,6 9



POBLADO

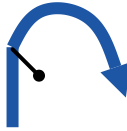
0,34

31

239°

1°17.203'S
78°49.756'W

33,9 3



CURVA EN
U

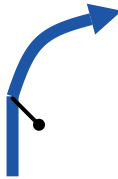
2,24

32

319°

1°17.643'S
78°50.768'W

34,5 5



POBLADO

0,62 ↓

33

80°

1°17.407'S
78°50.562'W

34,8 4



FIN ENLACE

0,29

34

1°17.328'S
78°50.536'W

35
Kilometers

34
Waypoints

35 km
Fuel Range

START
1°14.781'S
78°39.525'W

FINISH
1°17.328'S
78°50.536'W

RALLY F.F.F. 2026 PRIMERA VALIDA CAMPEONATO NACIONAL MAPA TRAMOS CRONOMETRADOS 5 - 6



LOMA GORDA - MULA CORRAL - TILIVI

DISTANCIA: 35 Km.

HORA INICIO TC 5 11:36 H

HORA CIERRE DE VIA 10:00 H

HORA INICIO TC 6 14:11 H

HORA CIERRE DE VIA 10:00H

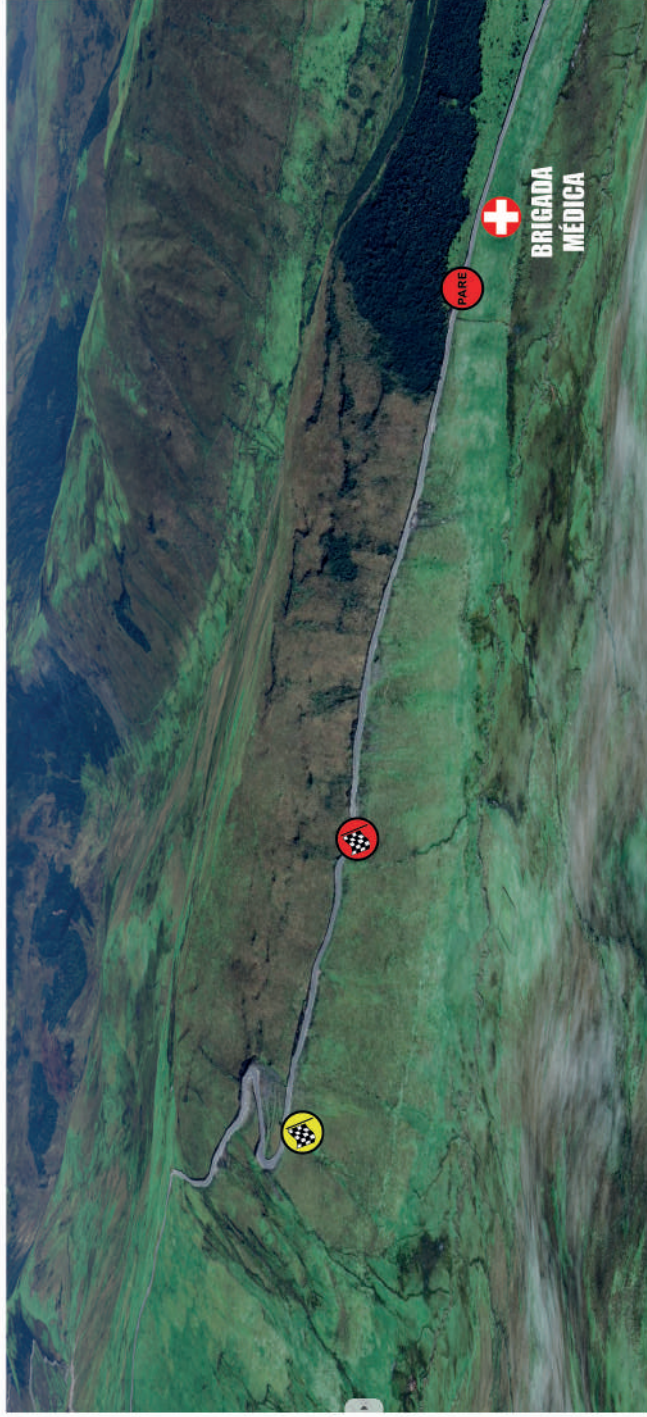
ALTITUD MINIMA 2.817 msnm

ALTITUD MAXIMA 4.172 msnm

SABADO 14 DE MARZO



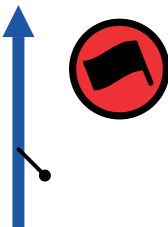
RALLY F.F.F. 2026 MAPA DEL FINAL DE LOS TRAMOS CRONOMETRADOS 5 - 6



**ESTOS TRAMOS CRONOMETRADOS SE ACORTAN
DEBIDO A TRABAJOS EN LOS ULTIMOS KM. DE LA VIA
EN EL KM. 35 ESTARA LA BANDERA DE LLEGADA
Y EN KM. 35.6 ESTARA LA MESA DE CONTROL.**

0,00
0,00

0000
Reset



INICIO PRIME

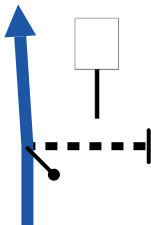
0,00

1

26°

1°17.328'S
78°50.535'W

1,31



SUBE

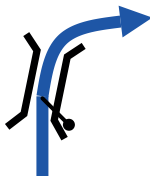
1,31

2

351°

1°16.708'S
78°50.488'W

3,40



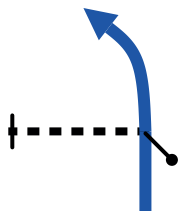
2,09

3

321°

1°15.931'S
78°50.791'W

3,97



CIEGO
BAJA

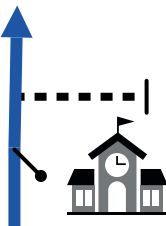
0,57

4

44°

1°15.731'S
78°50.596'W

4,40



ESCUELA
POBLADO

0,43

5

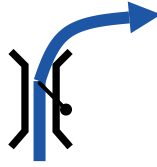
86°

1°15.578'S
78°50.496'W

5,31

0,91 ↓

6



PUENTE

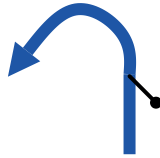
90°

1°15.209'S
78°50.419'W

5,44

0,13

7



CURVA EN

U

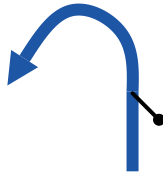
41°

1°15.228'S
78°50.350'W

7,89

2,45

8



CURVA EN

U

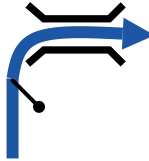
165°

1°14.463'S
78°50.436'W

9,35

1,46

9



PUENTE

16°

1°13.832'S
78°50.471'W

11,80

2,45

10



CURVA EN

U

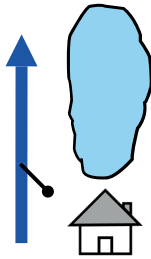
2°

1°12.635'S
78°50.446'W

14,8 0

3,00

11



PRESA
MULA CORRAL

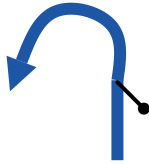
21°

1°11.603'S
78°49.709'W

15,3 9

0,59

12



CURVA EN
U

SUBE

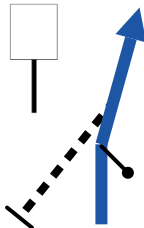
324°

1°11.288'S
78°49.712'W

18,8 6

3,47

13



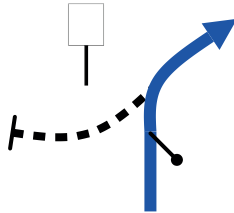
56°

1°09.794'S
78°49.311'W

20,1 5

1,29

14



BAJA

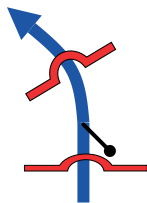
47°

1°09.318'S
78°48.879'W

23,4 5

3,30

15

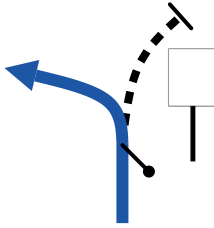


ROTO

120°

1°09.140'S
78°47.664'W

28,8 5



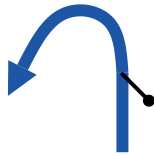
5,40

16

120°

1°10.849'S
78°47.287'W

30,7 2



CURVA EN
U

1,87

17

166°

1°11.421'S
78°46.876'W

33,9 8



3,26 ↓

18

130°

1°12.675'S
78°46.317'W

34,0 5



CURVA EN
U

BAJA

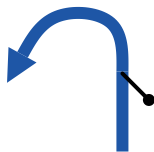
0,07 ↓

19

151°

1°12.695'S
78°46.288'W

34,2 1



CURVA EN
U

BAJA

0,16 ↓

20

240°

1°12.679'S
78°46.358'W

34,3 0

0,09

21



117°

1°12.719'S
78°46.339'W

34,8 0

0,50 ↓

22



SE ACERCA
A BANDERA
LLEGADA

112°

1°12.849'S
78°46.107'W

35,0 0

0,20



23



BANDERA ROJA

1

106°

1°12.877'S
78°46.006'W

35,6 0

0,60

24



MESA DE
CONTROL

1°13.045'S
78°45.728'W

36
Kilometers

24
Waypoints

36 km
Fuel Range

START
1°17.328'S
78°50.535'W

FINISH
1°13.045'S
78°45.728'W

0,00

0,00

0000

Reset



MESA DE CONTROL

0,00

1

131°

1°13.046'S
78°45.724'W

1,96

1,96

2



VIA ROTA

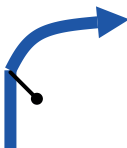
158°

1°13.929'S
78°45.218'W

3,23

1,27

3



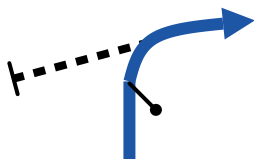
176°

1°14.357'S
78°44.814'W

5,05

1,82 ↓

4



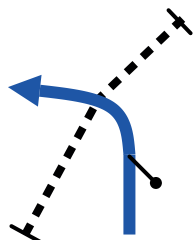
205°

1°14.574'S
78°44.129'W

5,21

0,16 ↓

5



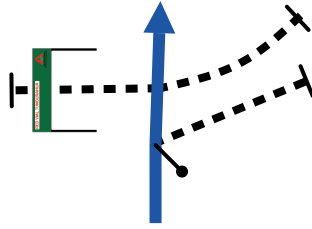
187°

1°14.612'S
78°44.201'W

PROXIMA NOTA
PROCH NOTE
NEXT NOTE

0,07

5,28



SUBE

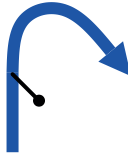
0,07

6

165°

1°14.649'S
78°44.194'W

6,48



BAJA
CASA AZUL

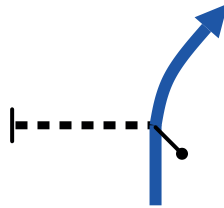
1,20

7

209°

1°15.034'S
78°43.738'W

8,48



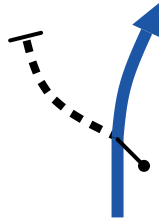
2,00

8

201°

1°15.588'S
78°43.954'W

9,03



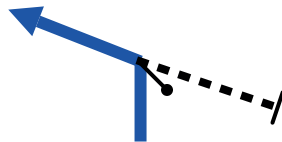
0,55

9

170°

1°15.736'S
78°43.814'W

9,55



0,52 ↓

10

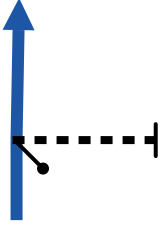
162°

1°15.845'S
78°43.940'W

9,8 1

0,26 ↓

11



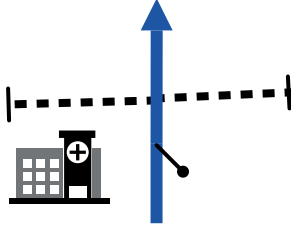
164°

1°15.980'S
78°43.899'W

9,9 1

0,10 ↓

12



CENTRO DE
SALUD PASA

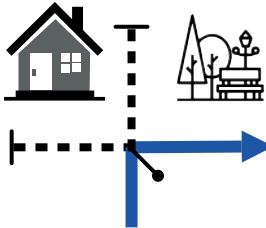
161°

1°16.030'S
78°43.885'W

10,0 1

0,10 ↓

13



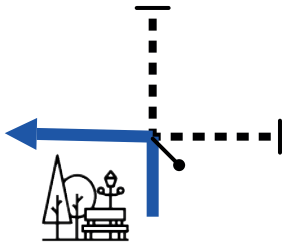
246°

1°16.081'S
78°43.874'W

10,0 8

0,07 ↓

14



PARQUE DE PASA

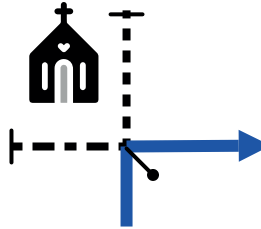
166°

1°16.098'S
78°43.912'W

10,1 6

0,08 ↓

15



BAJA

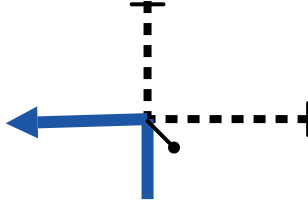
251°

1°16.138'S
78°43.902'W

10,2 4

0,08 ↓

16



167°

1°16.152'S
78°43.943'W

AV. SIMON
BOLIVAR

10,3 9

0,15

17



212°

1°16.234'S
78°43.940'W

12,5 5

2,16

18



155°

1°16.974'S
78°44.232'W

TOMAR
VIA AMBATO
LLEGAR AL P.
FAMILIA

13
Kilometers

18
Waypoints

13 km
Fuel Range

START
1°13.046'S
78°45.724'W

FINISH
1°16.983'S
78°44.228'W



OK

Presente este signo a
las 3 próximas
tripulaciones
si no es necesaria la
atención médica
o de bomberos



Presente este signo a
las 3 próximas
tripulaciones
si es necesaria la
atención médica
o de bomberos