



VALIDA

21

FEBRERO



LIBRO DE RUTA

assa

UNIVERSIDAD
UNIANDÉS

SEGUROS
UNIDOS

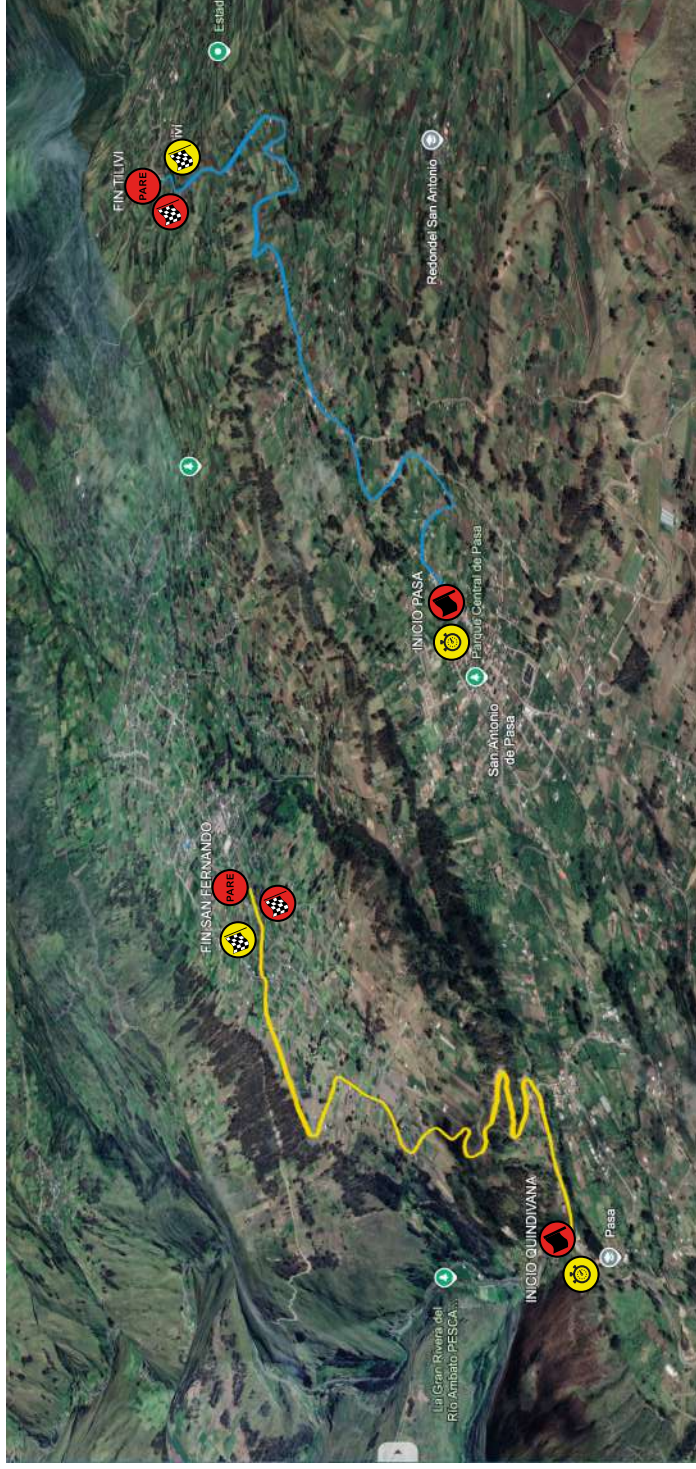
privilegio
seguros médicos prepagados

Grupo
Mavesa

Ford | QUITO MOTORS

KIA

MAPA TREPADA DE MONTAÑA Y CRONOGRAMA 1 VALIDA 21 DE FEBRERO



TC - 1

REVISION MECANICA Y DE SEGURIDAD
PARQUE CENTRAL DE SAN ANTONIO DE PASA
HORA: 08:00AM.

QUINDIVANA (INICIO VIA FLORES) - SAN FERNANDO DISTANCIA: 3,34 Km.

HORA INICIO TC 13:00

HORA CIERRE DE VIA 11:30

ALTITUD MINIMA 2.900 msnm

ALTITUD MAXIMA 3.240 msnm

TC - 2 - 3

PASA - TILIVI DISTANCIA: 4,45 Km.

HORA INICIO TC 14:00

HORA CIERRE DE VIA 12:30

ALTITUD MINIMA 3.109 msnm

ALTITUD MAXIMA 3.446 msnm



EJEMPLO DE DISPOSICIÓN DE UN TRAMO

SECUENCIA DE SALIDA DE UN TRAMO ESPECIAL



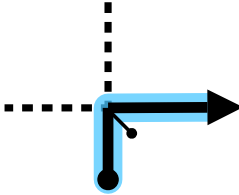
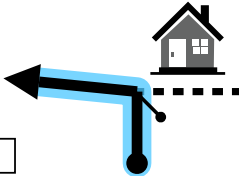
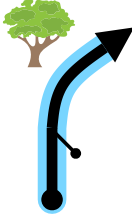



SECUENCIA DE META DE UN TRAMO ESPECIAL



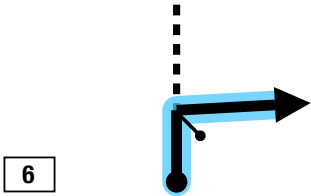
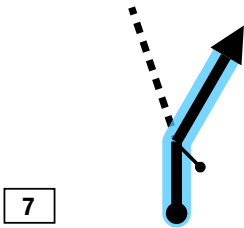
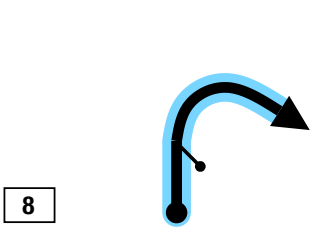
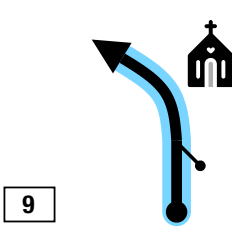
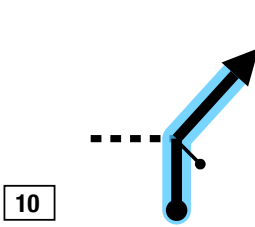
Precontrol de tiempos	Control de tiempos	Salida del tramo especial	Final zona de control
Premeta volante del tramo cronometrado	Meta volante del tramo cronometrado	Control de parada	Final zona de control

SÍMBOLOS TÍPICOS DE UN TRAMO

PARQUE SAN FERNANDO DE PASA		DISTANCE		SABADO	
QUINDIVANA VIA FLORES				SECTION	
ENLACE - TRANSITO		RECORD		TIME ALLOWED	
DISTANCE		DIRECTION		INFORMATION	
TOTAL	PARTIAL			DISTANCE REGRESS	
0,00 0,00	0,00	  <div style="border: 1px solid black; padding: 2px; width: 20px; text-align: center;">1</div>	INICIO ENLACE 3		4,84
0,09	0,09	 <div style="border: 1px solid black; padding: 2px; width: 20px; text-align: center;">2</div>	<div style="border: 1px solid black; padding: 2px; width: fit-content;">1°15.911'S 78°44.790'W ALT: 3240 m</div>		4,75
0,23	0,14	 <div style="border: 1px solid black; padding: 2px; width: 20px; text-align: center;">3</div>	<div style="border: 1px solid black; padding: 2px; width: fit-content;">1°15.903'S 78°44.712'W ALT: 3230 m</div>		4,61
0,58	0,35	 <div style="border: 1px solid black; padding: 2px; width: 20px; text-align: center;">4</div>	<div style="border: 1px solid black; padding: 2px; width: fit-content;">1°15.935'S 78°44.607'W ALT: 3200 m</div>		4,26
1,59	1,01	 <div style="border: 1px solid black; padding: 2px; width: 20px; text-align: center;">5</div>	CURVA EN U		3,25
				<div style="border: 1px solid black; padding: 2px; width: fit-content;">1°16.227'S 78°44.216'W ALT: 3160 m</div>	


PROXIMA NOTA
PROCH NOTE
NEXT NOTE

0,82

PARQUE SAN FERNANDO DE PASA		DISTANCE		SABADO	
QUINDIVANA VIA FLORES				SECTION	
ENLACE - TRANSITO		RECORD		TIME ALLOWED	
DISTANCE		DIRECTION		INFORMATION	
TOTAL	PARTIAL			DISTANCE REGRESS	
2,40	0,81	 6		POBLADO PASA	
2,60	0,20	 7		BAJA	
3,00	0,40	 8		CURVA EN U	
4,01	1,01	 9		POBLADO QUINDIVANA	
4,79	0,78	 10		VIA FLORES	

PROXIMA NOTA
PROCH NOTE
NEXT NOTE

0,06

PARQUE SAN FERNANDO DE PASA		DISTANCE		SABADO	
QUINDIVANA VIA FLORES				SECTION	
ENLACE - TRANSITO		RECORD		TIME ALLOWED	
DISTANCE		DIRECTION		INFORMATION	
TOTAL	PARTIAL				DISTANCE REGRESS
4,84	0,05			FIN ENLACE	0,00
		11			

5
Kilometers

11
Waypoints

5 km
Fuel Range

START
1°15.958'S
78°44.781'W

FINISH
1°16.953'S
78°44.248'W

0,00

0000

Reset



INICIO TC1

1

0,00

0,00



1

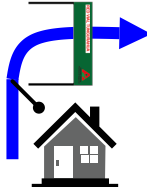
331°

1°16.944'S
78°44.254'W

0,02

0,02

2



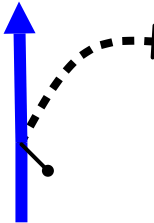
60°

1°16.934'S
78°44.258'W

0,45

0,43

3



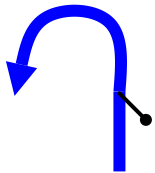
351°

1°16.718'S
78°44.191'W

0,50

0,05

4



CURVA EN
U

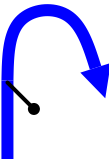
284°

1°16.695'S
78°44.195'W

0,70

0,20

5



CURVA EN
U

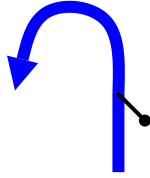
334°

1°16.770'S
78°44.265'W

0,89

0,19

6



344°

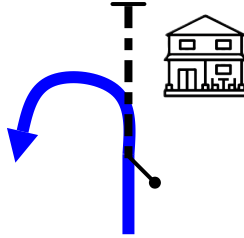
CURVA EN
U

1°16.676'S
78°44.226'W

1,36

0,47

7



256°

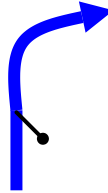
CURVA EN
U

1°16.729'S
78°44.346'W

1,68

0,32

8



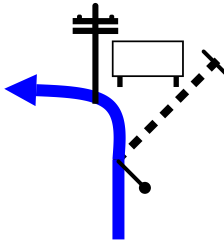
271°

1°16.728'S
78°44.502'W

2,14

0,46 ↓

9



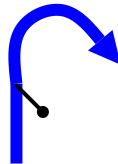
288°

1°16.548'S
78°44.638'W

2,39

0,25

10

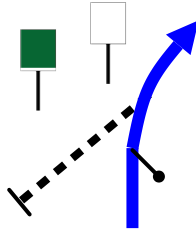


229°

CURVA EN
U

1°16.623'S
78°44.745'W

2,98



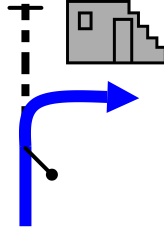
0,59 ↓

11

41°

1°16.336'S
78°44.796'W

3,08



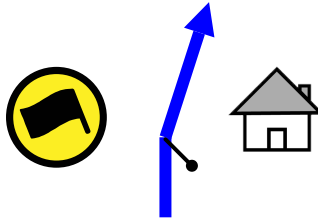
0,10 ↓

12

337°

1°16.294'S
78°44.778'W

3,15



0,07 ↓

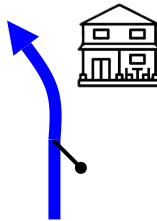
13

45°

1°16.262'S
78°44.767'W

CASA ADOBE

3,26



0,11 ↓



14

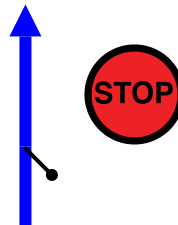
31°

1°16.215'S
78°44.729'W

BANDERA FIN

2

3,34


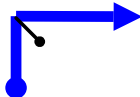
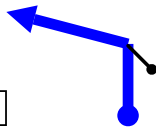
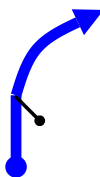
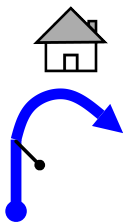


0,08

15







MESA CONTROL

1°16.172'S
78°44.735'W

SAN FERNANDO		DISTANCE		SABADO	
PASA		RECORD		SECTION	
ENLACE - TRANSITO				TIME ALLOWED	
DISTANCE		DIRECTION	INFORMATION	DISTANCE REGRESS	
TOTAL	PARTIAL				
0,00	0,00	<div style="border: 1px solid black; padding: 2px; display: inline-block;">1</div> 	<p style="text-align: center;">INICIO ENLACE</p>		2,97
0,50	0,50	<div style="border: 1px solid black; padding: 2px; display: inline-block;">2</div> 	<p style="text-align: center;">BAJA</p> <div style="border: 1px solid black; padding: 2px; display: inline-block; width: fit-content;"> 1°15.911'S 78°44.790'W ALT: 3240 m </div>		2,47
0,64	0,14	<div style="border: 1px solid black; padding: 2px; display: inline-block;">3</div> 	<div style="border: 1px solid black; padding: 2px; display: inline-block; width: fit-content;"> 1°15.903'S 78°44.714'W ALT: 3230 m </div>		2,33
0,99	0,35	<div style="border: 1px solid black; padding: 2px; display: inline-block;">4</div> 	<div style="border: 1px solid black; padding: 2px; display: inline-block; width: fit-content;"> 1°15.935'S 78°44.608'W ALT: 0 m </div>		1,98
2,00	1,01	<div style="border: 1px solid black; padding: 2px; display: inline-block;">5</div> 	<p style="text-align: center;">CURVA EN</p> <p style="text-align: center;">U</p>		0,97

PROXIMA NOTA
PROCH NOTE
NEXT NOTE

0,52

SAN FERNANDO		DISTANCE		SABADO	
PASA				SECTION	
ENLACE - TRANSITO		RECORD		TIME ALLOWED	
DISTANCE		DIRECTION	INFORMATION	DISTANCE REGRESS	
TOTAL	PARTIAL				
2,52	0,52	  <div style="border: 1px solid black; padding: 2px; display: inline-block;">6</div>	ESTADIO PASA	0,45	
2,91	0,39	  <div style="border: 1px solid black; padding: 2px; display: inline-block;">7</div>	PARQUE PASA	0,06	
2,97	0,06	 <div style="border: 1px solid black; padding: 2px; display: inline-block;">8</div>	FIN ENLACE	0,00	

3
Kilometers

8
Waypoints

3 km
Fuel Range

START
1°16.173'S
78°44.737'W

FINISH
1°16.129'S
78°43.900'W

0,00

0,00

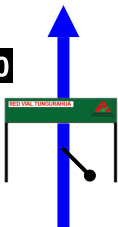
0,00



1

0000

Reset



INICIO TC 2 - 3

1

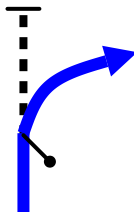
343°

1°15.976'S
78°43.900'W

0,26

0,26

2



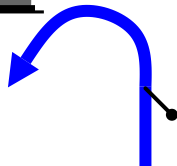
46°

1°15.842'S
78°43.938'W

0,54

0,28

3



CURVA EN

U

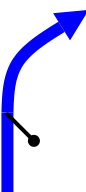
115°

1°15.834'S
78°43.809'W

1,09

0,55

4



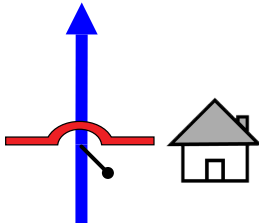
338°

1°15.691'S
78°43.975'W

1,62

0,53

5

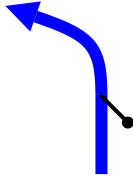


CHICAN
ANTES DEL ROMPE
VELOCIDAD

2°

1°15.426'S
78°44.005'W

2,24



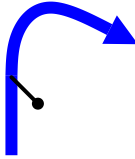
0,62 ↓

6

323°

1°15.103'S
78°43.956'W

2,31



0,07

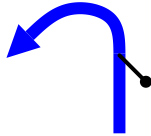
7

304°

CURVA EN
U

1°15.094'S
78°43.992'W

2,81



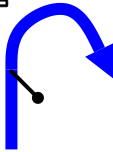
0,50 ↓

8

92°

1°15.126'S
78°43.798'W

3,08



0,27 ↓

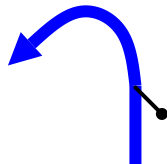
9

3°

CURVA EN
U

1°15.003'S
78°43.830'W

3,27



0,19

10

90°

CURVA EN
U

1°15.045'S
78°43.752'W

3,79

0,52

11



315°

1°14.918'S
78°43.957'W

4,15

0,36 ↓

12



313°

1°14.807'S
78°44.104'W

ADVERTENCIA
META

4,25

0,10



13



358°

1°14.759'S
78°44.128'W

META
TRAMO ESPECIAL

2

4,45

0,20

14



MESA DE CONTROL

1°14.678'S
78°44.185'W




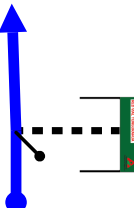
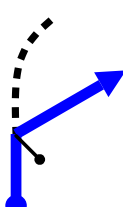
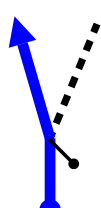
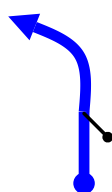
4
Kilometers

14
Waypoints

4 km
Fuel Range

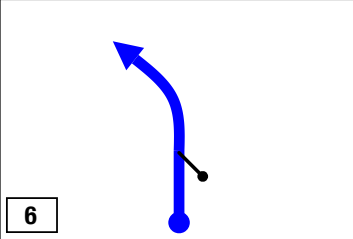
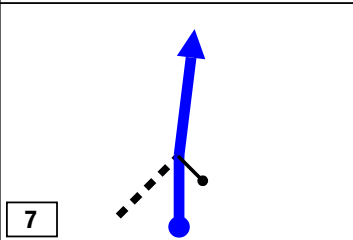
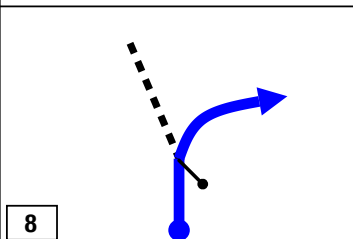
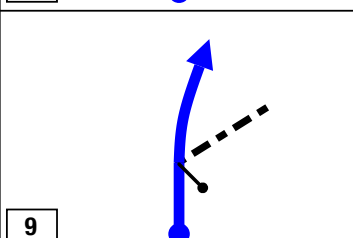
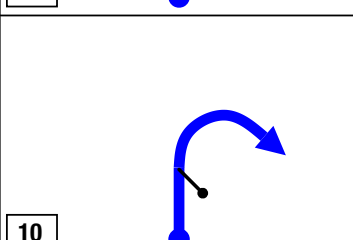
START
1°15.976'S
78°43.900'W

FINISH
1°14.678'S
78°44.185'W

TILVI - PUNGOLOMA - SIGUITAG - MOGATO		DISTANCE	SABADO	
PASA			SECTION	
ENLACE - TRANSITO		RECORD	TIME ALLOWED	
DISTANCE		DIRECTION	INFORMATION	DISTANCE REGRESS
TOTAL	PARTIAL			
0,00	0,00	<div style="border: 1px solid black; padding: 2px; display: inline-block;">1</div> 	INICIO ENLACE	14,05
0,03	0,03	<div style="border: 1px solid black; padding: 2px; display: inline-block;">2</div> 		14,02
0,11	0,08	<div style="border: 1px solid black; padding: 2px; display: inline-block;">3</div> 		13,94
0,41	0,30	<div style="border: 1px solid black; padding: 2px; display: inline-block;">4</div> 	POBLADO	13,64
1,20	0,79	<div style="border: 1px solid black; padding: 2px; display: inline-block;">5</div> 		12,85

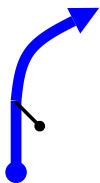
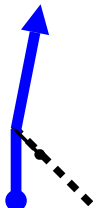
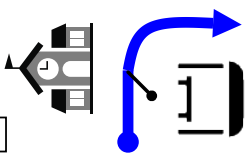
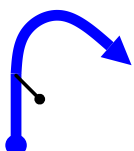
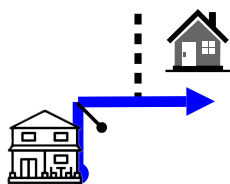
PROXIMA NOTA
PROCH NOTE
NEXT NOTE

1,56

TILVI - PUNGULOMA - SIGUITAG - MOGATO		DISTANCE	SABADO	
PASA			SECTION	
ENLACE - TRANSITO		RECORD	TIME ALLOWED	
DISTANCE		DIRECTION	INFORMATION	DISTANCE REGRESS
TOTAL	PARTIAL			
2,76	1,56	 6	POBLADO	11,29
3,13	0,37	 7		10,92
3,37	0,24	 8	PUNGULOMA POBLADO	10,68
3,39	0,02	 9	PUNGULOMA POBLADO	10,66
4,27	0,88	 10	CURVA EN U	9,78

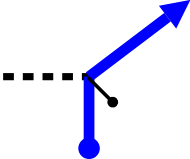

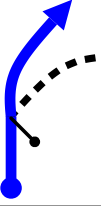
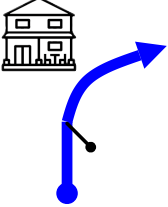
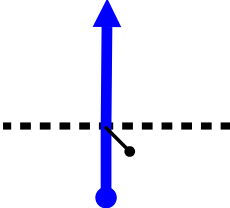
PROXIMA NOTA
PROCH NOTE
NEXT NOTE

1,29

TILIVI - PUNGOLOMA - SIGUITAG - MOGATO		DISTANCE	SABADO	
PASA			SECTION	
ENLACE - TRANSITO		RECORD	TIME ALLOWED	
DISTANCE		DIRECTION	INFORMATION	DISTANCE REGRESS
TOTAL	PARTIAL			
5,56	1,29	<div style="border: 1px solid black; padding: 2px; display: inline-block;">11</div> 	POBLADO	8,49
5,83	0,27	<div style="border: 1px solid black; padding: 2px; display: inline-block;">12</div> 	POBLADO	8,22
7,01	1,18	<div style="border: 1px solid black; padding: 2px; display: inline-block;">13</div> 	POBLADO SIGUITAG BAJA	7,04
8,75	1,74	<div style="border: 1px solid black; padding: 2px; display: inline-block;">14</div> 	CURVA EN U	5,30
9,16	0,41	<div style="border: 1px solid black; padding: 2px; display: inline-block;">15</div> 	POBLADO MOGATO	4,89

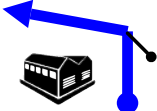
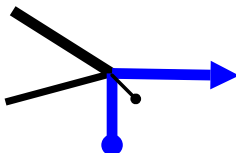
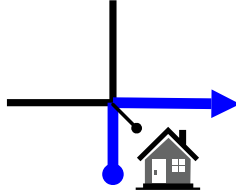
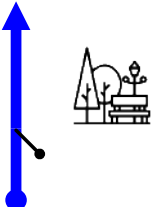
PROXIMA NOTA
PROCH NOTE
NEXT NOTE

0,38

TILIVI - PUNGOLOMA - SIGUITAG - MOGATO		DISTANCE	SABADO	
PASA		RECORD	SECTION	
ENLACE - TRANSITO		RECORD	TIME ALLOWED	
DISTANCE		DIRECTION	INFORMATION	DISTANCE REGRESS
TOTAL	PARTIAL			
9,54	0,38	 16	BAJA	4,51
10,20	0,66	 17	POBLADO LLULLALO INICIO ASENSO	3,85
12,23	2,03	 18		1,82
12,70	0,47	 19		1,35
13,36	0,66	 20		0,69

PROXIMA NOTA
PROCH NOTE
NEXT NOTE

0,21

TILIVI - PUNGOLOMA - SIGUITAG - MOGATO		DISTANCE	SABADO	
PASA		RECORD	SECTION	
ENLACE - TRANSITO		RECORD	TIME ALLOWED	
DISTANCE		DIRECTION	INFORMATION	DISTANCE REGRESS
TOTAL	PARTIAL			
13,57	0,21	 21	MERCADO PASA	0,48
13,75	0,18	 22	FONDO AV. SIMON BOLIVAR	0,30
13,96	0,21	 23	CALLE SAN FERNANDO	0,09
14,05	0,09	 24	FIN ENLACE PARQUE PASA	0,00

14
Kilometers

24
Waypoints

14 km
Fuel Range

START
1°14.672'S
78°44.188'W

FINISH
1°16.099'S
78°43.910'W



OK

Presente este signo a
las 3 próximas
tripulaciones
si no es necesaria la
atención médica
o de bomberos



Presente este signo a
las 3 próximas
tripulaciones
si es necesaria la
atención médica
o de bomberos